



ELECTRO CABLAGE
ENGINEERING ET
EQUIPEMENT

CONTROLE D'ACCES • GESTION DE PARCS A DISTANCE
• DETECTION DE CHOCS ET DE PROXIMITE •



PROXY TRUCK SYSTEM

One single product for a global security !

- Speed limitation
- Fork height control
- Access control
- Inventory
- Anti-theft function
- Offloading docks safety

A global prevention for a safer environment

Proximity information: prevent accidents, personal injury and handling equipment damage.

Protection in delimited zone: improve both employees and handling equipment security

Access control: protect your workplaces

1 device

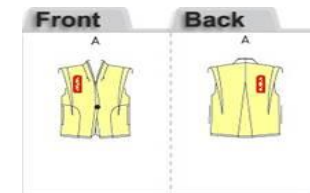


1 transmitter / tag



The main function of our ProxyTruck system is to detect dynamic or static proximity to avoid potential dangerous situations. Furthermore, this system is dedicated to adapt handling equipment to specific situation.

- Active and static tags could be presented on armband, necklace or any other support (*feel free to contact us*). They could be placed on-board too.
- Active and static tags have to be strategically positioned on delimited zones, doors or crossroads, where action is requested.



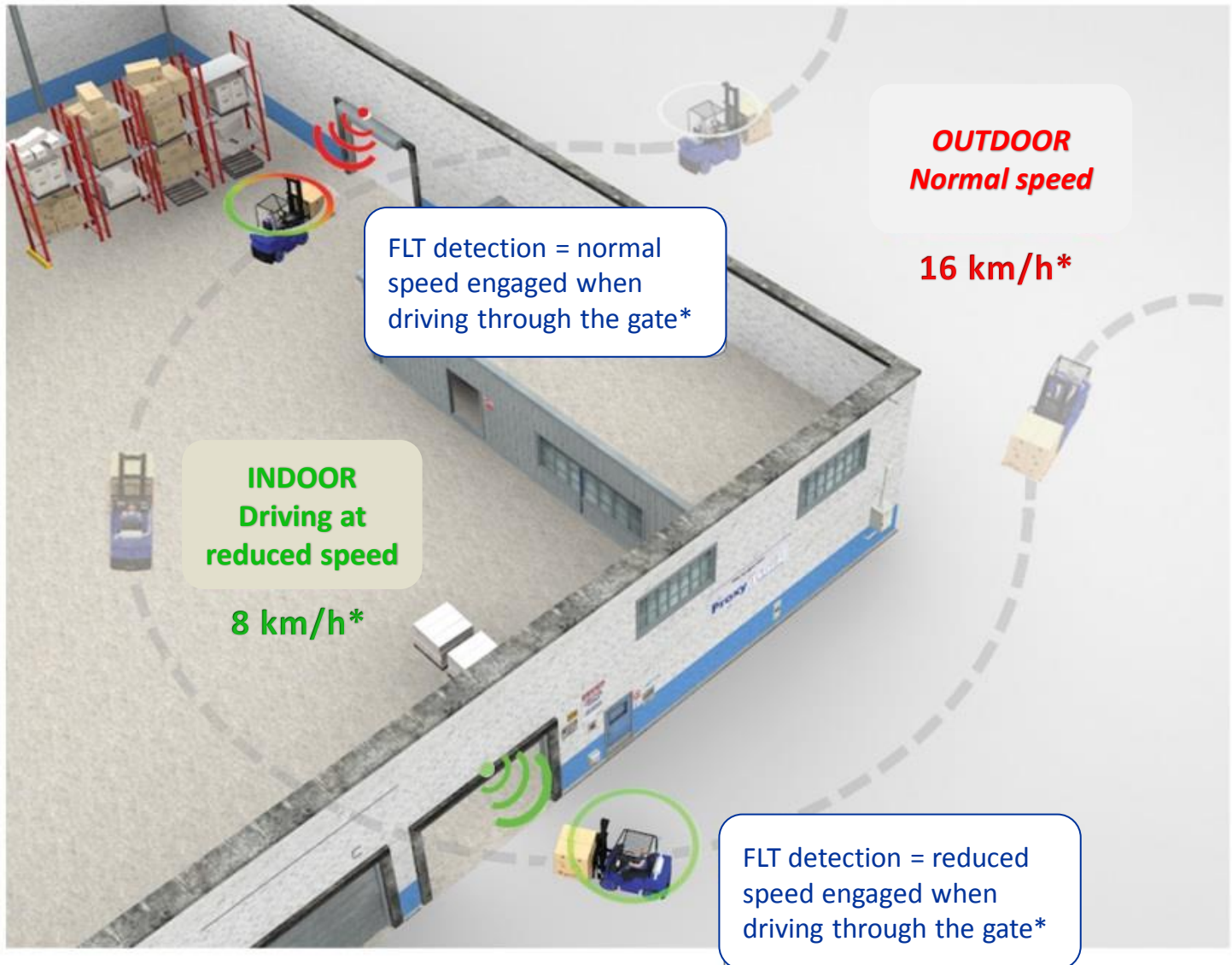
Automatic speed limitation in delimited area

Proxy tags on
access gates

Proxy device on
FLT



Automatic speed
limitation



* Speeds are modified by an action on FLT variator or Canbus. High and slow speeds are defined by the client.

PROXY TRUCK provides a dry contact for 1 data entry (variator). Thus, it could be necessary to add mechanical or electric devices (Namur etc)



220V Proxy device on
gate*

Proxy tag on FLT



Automatic access
control or on-board
function (push-button)

PROXY TRUCK

Fork height control

To avoid this situation...



... Use the right equipment: Proxy tags on gate and Proxy device with fork height detection on the FLT ...

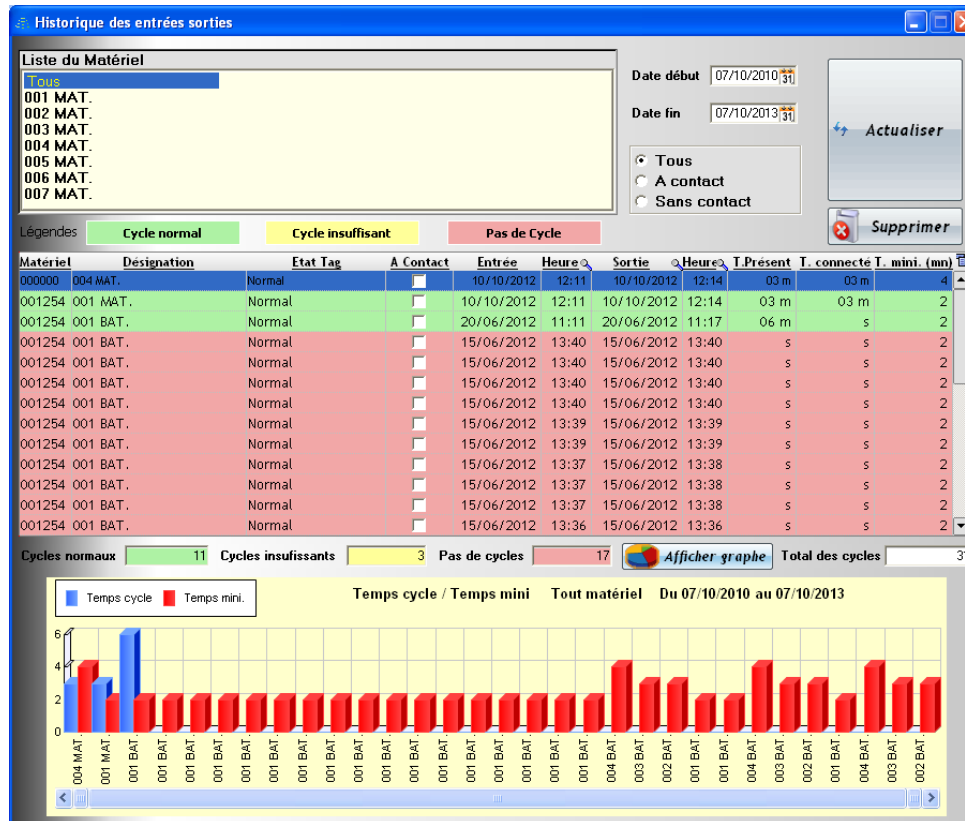


... The operator will be informed by a visual or audible alarm, or by a changing state of the FLT (slowdown or stop*)

* A push-button resets the 'stop' function and allows to leave the secured area.

Products inventory, presence or turn-over

- Attendance (ex: battery)
- FLT availability (fleet)
- Battery's connection time
- Charging cycles



Fiche MATERIEL

N° Matériel 001254 Etat Tag

Matériel 001 MAT.

Etat Matériel Avec Contact

Date d'Entrée A

T. présent s T. Mini. mn 2

T. Connecté s Pris en cpte 1

Valider Annuler

To avoid this situation...



... Use the right equipment: Proxy Truck tags for your docks or any other area to secure and Proxy Truck device on FLT.



Automatic speed limitation when FLT is approaching the dock or secured area



* Speeds are modified by an action on FLT variator or Canbus.
High and slow speeds are defined by the client.

To avoid this situation...



... Use Proxy tags on your FLT (electric or not) and Proxy Truck device on the checkpoint.



Closing of security barriers or visual / audible alert when approaching the checkpoint.

Proxy Truck is adapting to your requests!

- Our solution can adapt to many situations and needs. Do not hesitate to contact us to submit your issue. We realize personalized site survey and assist you to define specifications considering environment specificities as: activity, obstacle, warehouse, pollution, radiance, high voltage line...
- *Please note: Laws and regulations provide necessary but not sufficient rules. Thus, Proxy Truck offers a complementary process, based on respect and awareness of all employees involved. Proxy Truck does not relieve operators from responsibility and has to be used in addition to existing safety measures. FLT's management and control, as well as operations safety, remain operators and Security Service responsibility.*

They chose Proxy Truck ...



PROXY TRUCK	Ref : 737000
Working	Active RFID
Voltage	Dynamic Material Version: 12 to 80 V Static Materials Version: 110, 220 and 380 V
Connecting & Equipments	1 power wiring Relays 1 et 2 output order (repos, travail) extern antenna
Configuration	Warehouse ; with ESK Proxy Truck software (rayonnement et filtrage)
Radio Band	868 MHz
Temperature	-20 to 60 °C
Material	ABS
Weight	400 g
Dimensions (L x l x h, mm)	130 x 95 x 55 mm

- Telecommunication 868MHz band
- Option: 1 Buzzer output (R3)
- Detection distance up to 50 meters
- Unlimited detectable tags
- Configuration by specific software (RS232, Bluetooth)
- Compatible for industrial use, freight, logistics...



- **EXTRA LONG LIFE** Lithium battery (3 to 8 years depending on transmitting frequency)
- Battery exchange and control by our after-sale service
- Static or dynamic version
- Tag dispatching per group or ID
- Functional state: 2 led (active, battery change)
- Possible excluded Tag (ex: driver, passenger)
- Configurable transmitting frequency
- Remote mode (output)
- Possibility to create family groups according to their assignments (allowing different actions).



NB: tag also available in a 220V version (power supply) and in a 12 to 80V version (equipped material tension). In this case, no battery is needed.

EC2E

ZAC du pont des Rayons - 4 bd Napoléon 1er

95290 – L'Isle-Adam

T : +33 (0)1.83.02.02.02

F : +33 (0)1.34.08.18.18

contact@ec2e.com

And find out more information on our website...

www.ec2e.com