

Overhead Crane BLUE Or RED Warning Lights

- Improve pedestrians awareness of overhead crane movement
- Improve operator control of heavy awkward loads
- Obvious blue or red LED beam warns of approaching hook or load
- Easy to install to any IC or EL crane 12-24-36-48 VDC
- Designed for heavy duty outdoor applications
- Adjustable 150 degree mounting bracket for proper beam placement

POWERFULL ENOUGH TO BE SEEN !!! 14 FOCUSED CREE LED LENS--SPOT+LINE



Product parameters:



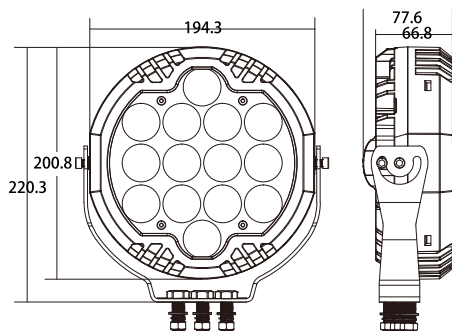
7"140W

Product parameters

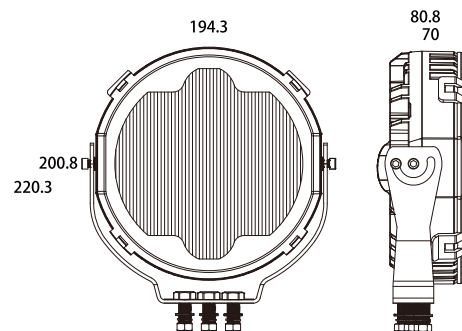
LED Quantity : 14pcs
 Beam Pattern : Spot/Line
 Housing Material : Aluminum
 Lens Material : PC
 IP Grade : IP67
 VOLTAGE : 9-48V

Size:

No lampshade
[mm]



With lampshade
[mm]



Installation diagram:

Step 1

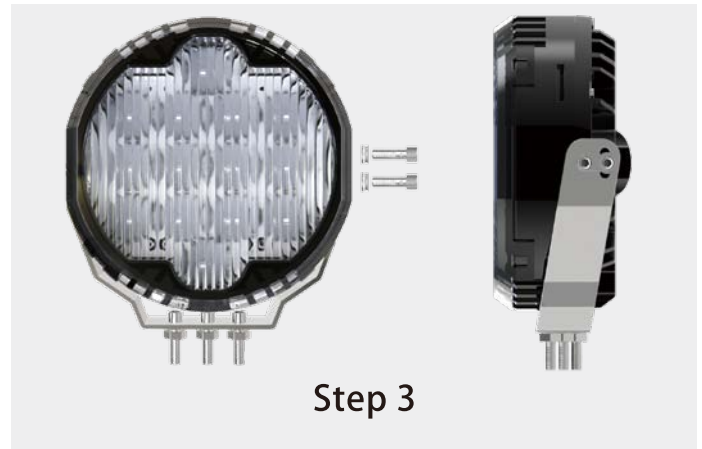
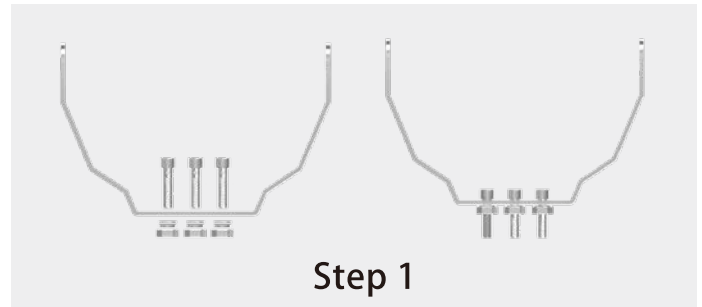
Tighten three bolts at the bottom of the bracket

Step 2

Tighten the two screws on the left side of the lamp

Step 3

Tighten the two screws on the right side of the lamp



Parts list:

